

Set up & Configuration for Windows XP

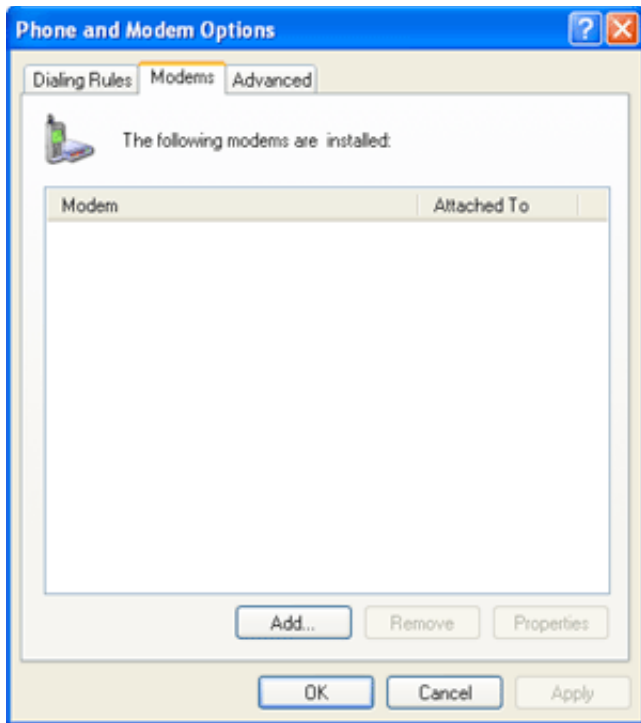
Click the **Start** menu and open **Control Panel**



Choose "Phone and Modem Options".



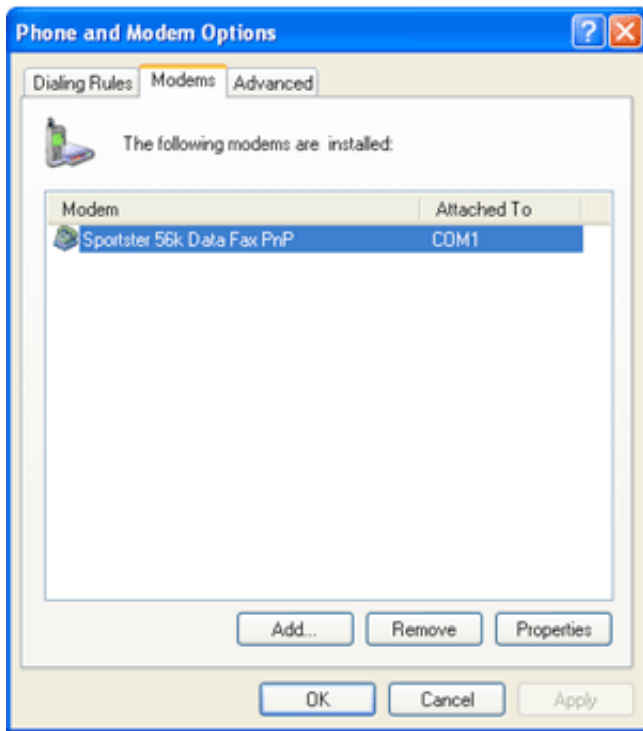
Click the Modems tab. If your modem is installed and properly working, proceed to Dial-Up Connection Step 1 below. Otherwise, click Add.



Click "Next" to continue with the Add Hardware Wizard.



If WindowsXP was successfully able to detect your modem, then you should see something highlighted similar to what is shown below. If not, you either do not have a modem or WindowsXP does not recognize it. In the latter case, consult your modem manual or manufacturer to troubleshoot.

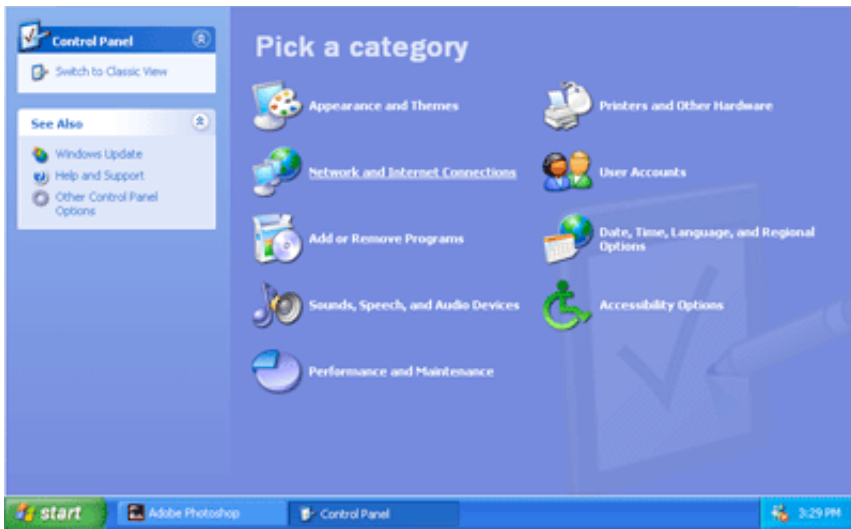


Step 1.

Click the **Start** Menu and open the **Control Panel**.



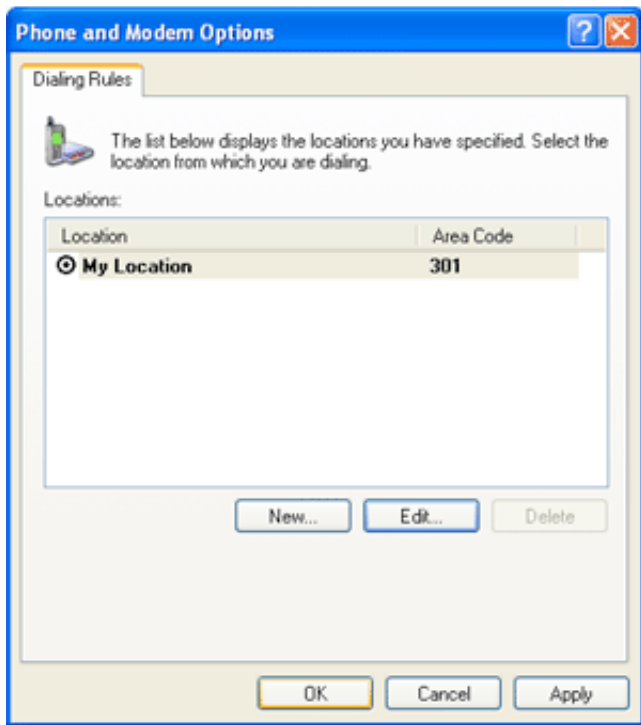
Click **Network** and **Internet Connections**.



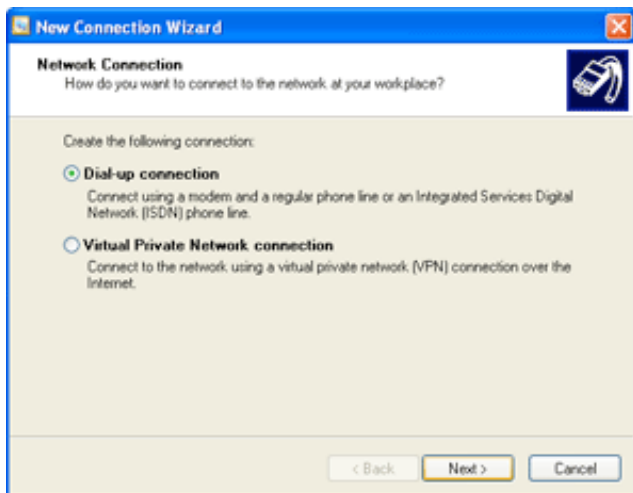
Specify your **Location Information** as appropriate but do not specify the area code.



Click **OK** which will take you to the window below.

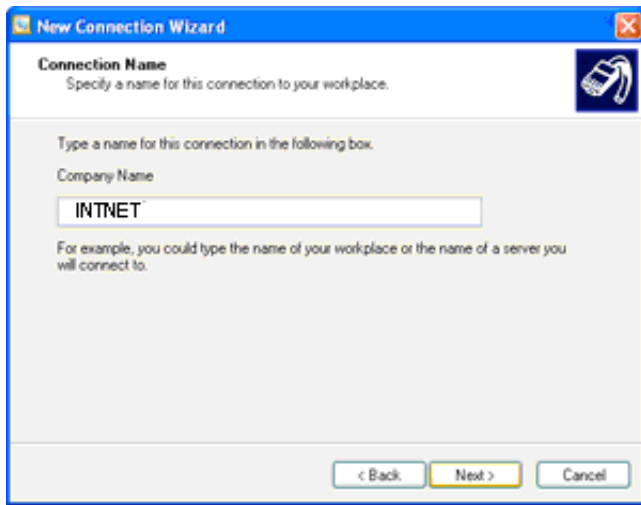


Click **OK** which will take you to the New Connection Wizard.

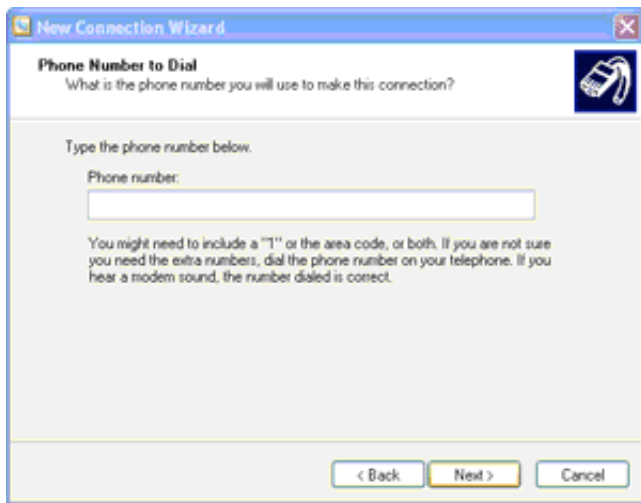


In the New Connection Wizard, select "Dial-up connection" and click **Next**.

Then type in "INTNET" in the **Company Name** field and click **Next**.



Type in the appropriate dial-up phone number from list supplied and click **Next**.

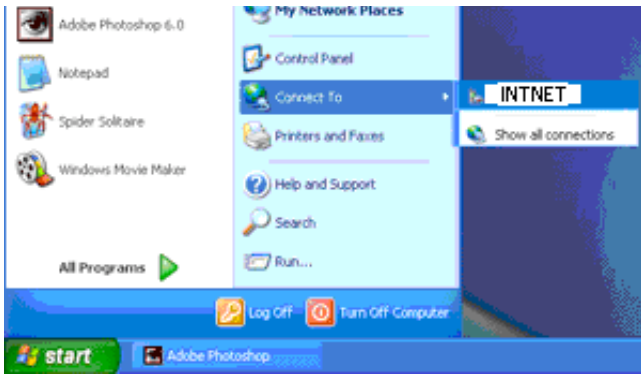


You have successfully completed configuring the dial-up connection so click **Finish**.



CONNECTING

Click the **Start Menu**, then go to **Connect To**, then click **INTNET**.

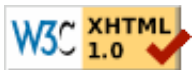


Type your User name and password. Be sure to check **Save Password**.

Then click **Dial**.



Your modem will then dial up and connect to INTNET.



Copyright © 1994 - Updated March 2004 by Intelligence Network, Inc.
(727) 442-0114 or sales@IntNet.net