

# Set up for Windows 2000

Before we get started, make sure you have exited all the programs that you may have open. Then open the MY COMPUTER icon You should see something like this:



Next click the "Network and Dial-Up Connections" link. When you see the a window like the one below, double click on the "Make New Connection" icon.



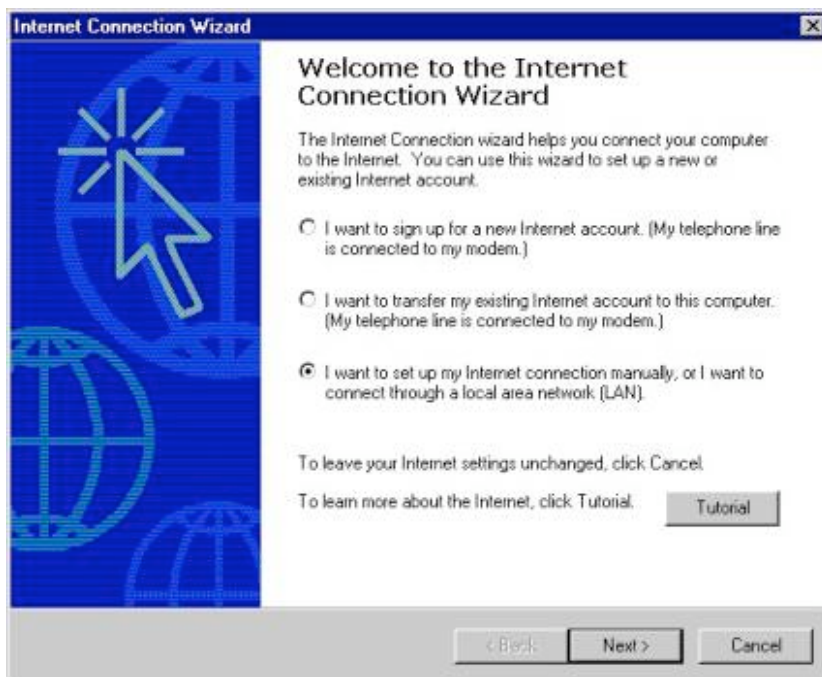
## The Setup Wizard

After activating the Wizard the first thing you should do is click on the "Next" button which will take you to a window which looks like this:

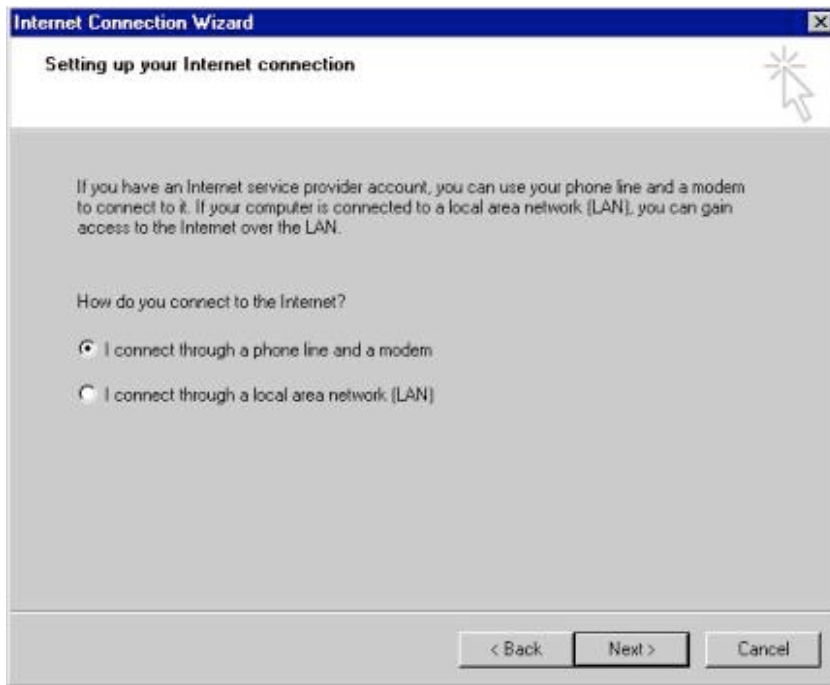


and you would select "Dial-up to the Internet" and then click "Next".

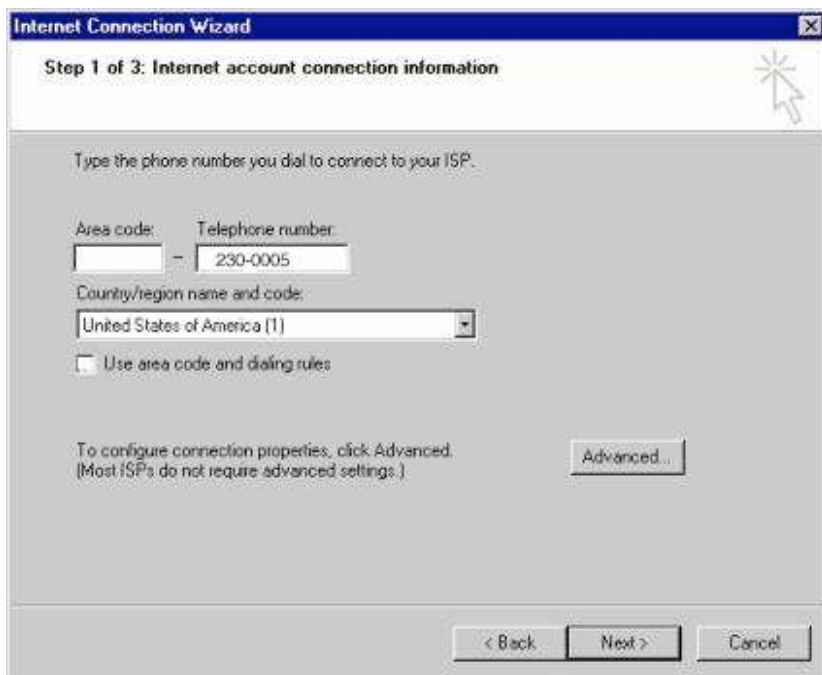
Then you would select the third option below and click "Next" after doing so.



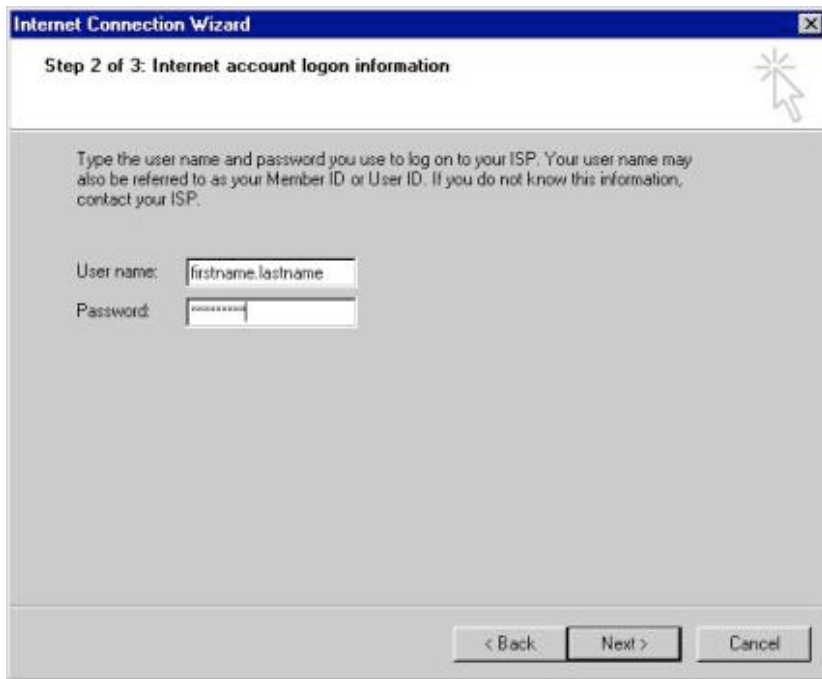
Next select the first option as below.



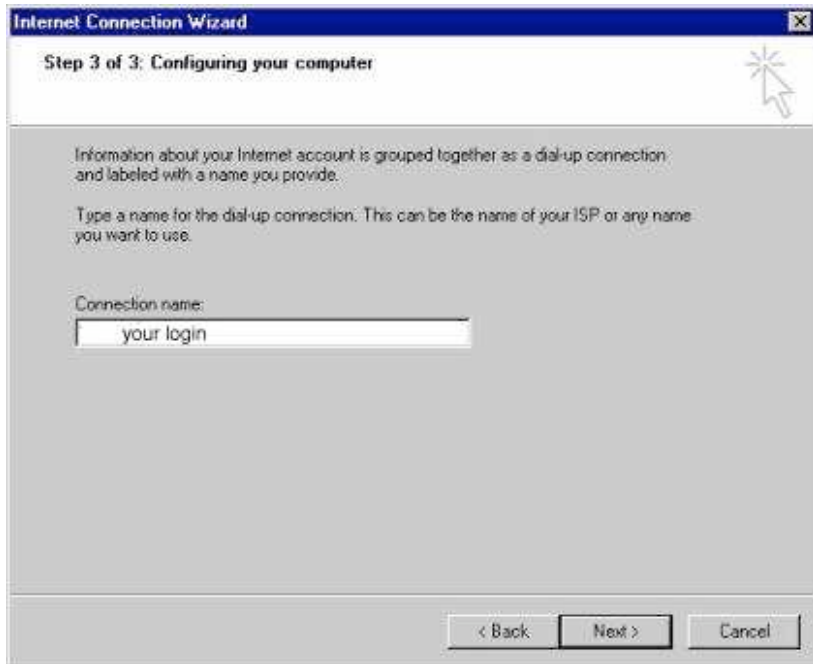
Next type in the IntNet dial-up number for your area, uncheck "Use Area Code and Country Rules" , and click "Next"



Type in your Full Name and your password and click "Next".



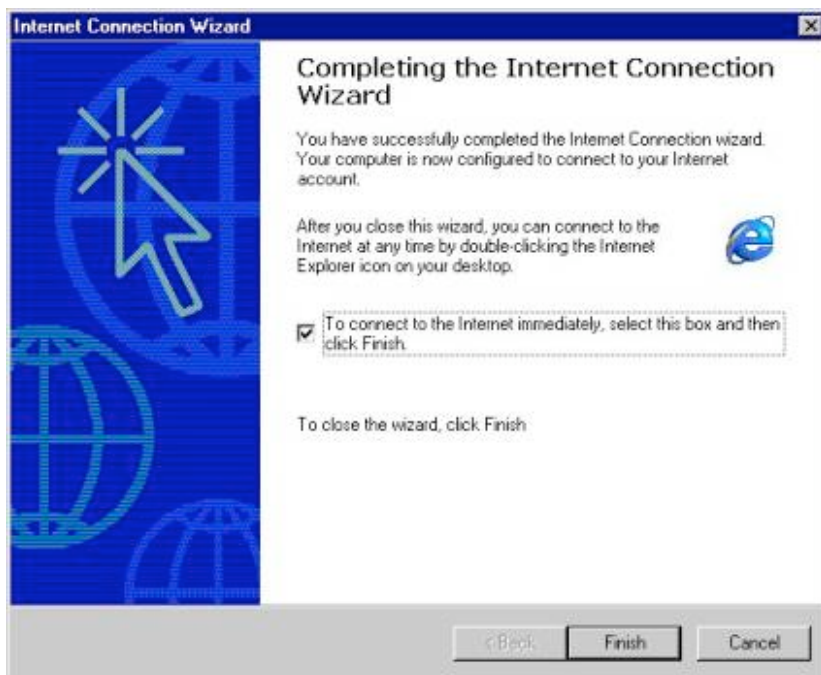
Type in the login you were assigned and click "Next"



Select "No" as below and click "Next".



Lastly, click in the check box (if you would like to try to connect right away) and click "Finish". If you don't want to connect immediately, just click "Finish".



To connect in the future double click the "My Computer" folder on your desktop, select the "Network and Dial-Up Connections" link, and double click the connection entry that you made using these instructions. When the Connect window pops up, click Dial.

