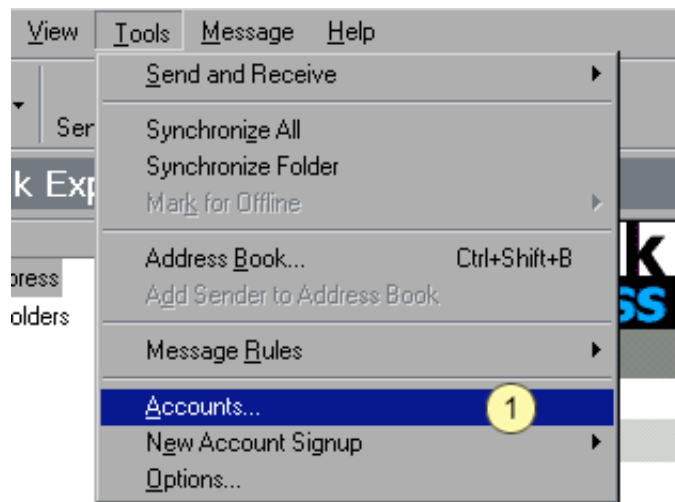
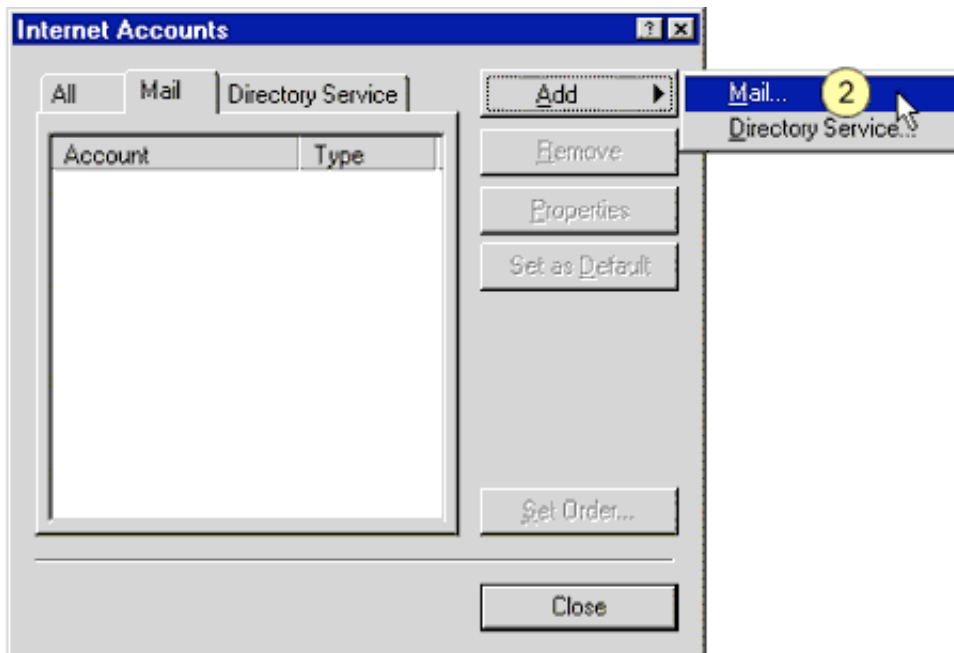


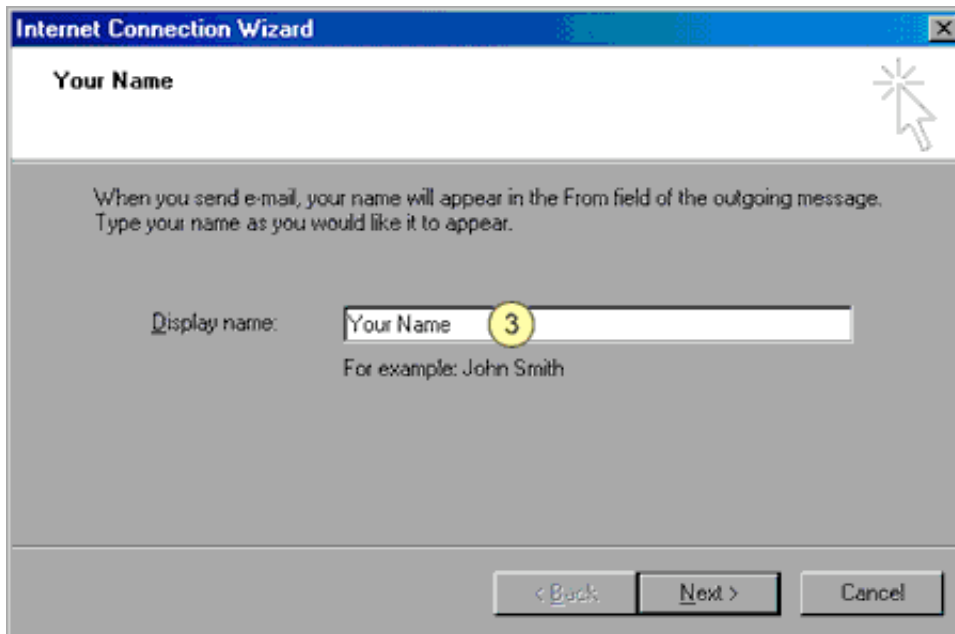
Setting up Email with Outlook Express 5.X



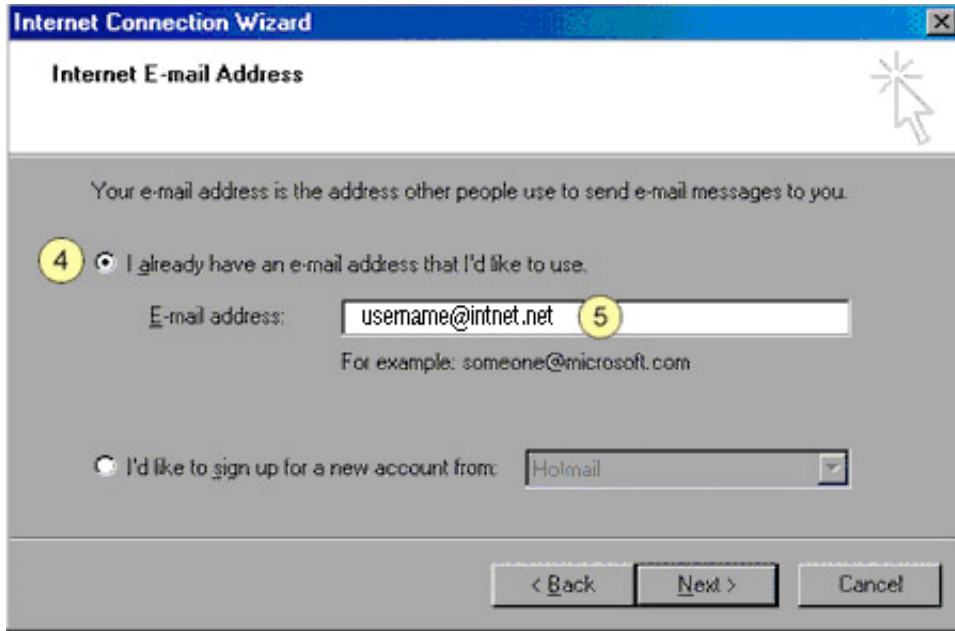
1. Click the "TOOLS" menu and choose "ACCOUNTS" and then "MAIL" tab. (Note: If an account is already installed there that you no longer use, you may click it once to select it, and then click REMOVE)



2. Click the "Add" button and choose "Mail...".



3. Type your name. Click Next.



4. Click "I already have an e-mail address...".

5. Type your email address. (Your Mailbox name followed by @intnet.net)
Click Next.

6. Select POP3 or IMAP.
7. Type your Incoming mail server as: mail.intnet.net
8. Type your Outgoing mail server as: mailhost.intnet.net

*NOTE: If you are connected to the Internet via an ISP other than Intnet, you will need to set the SMTP server to that of your provider.

Click Next.

Internet Connection Wizard

Internet Mail Logon

Type the account name and password your Internet service provider has given you.

Account name: put your full e-mail address here!

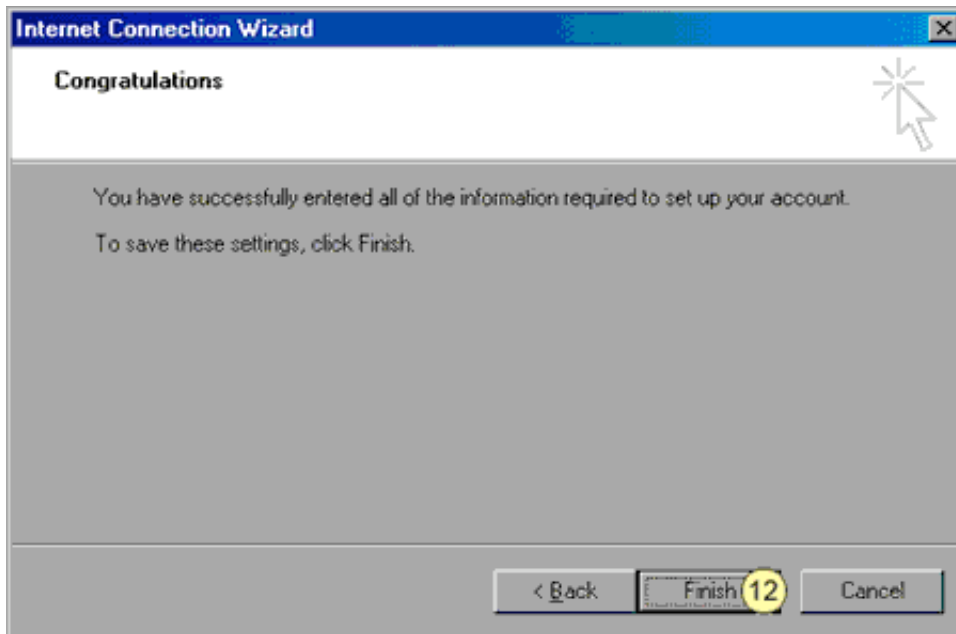
Password: password

Remember password

If your Internet service provider requires you to use Secure Password Authentication (SPA) to access your mail account, select the Log On Using Secure Password Authentication (SPA) radio button.

< Back Next > Cancel

9. Type your full e-mail address here (in all lower-case letters).
10. Type your password (your password is case sensitive).
11. If want your password saved, so you don't have to type it when checking email, place a checkmark here. Click Next.



12. Click FINISH to save your settings.
On the Internet Accounts window click on CLOSE.
To create a message to send, click on NEW MAIL.
To send and receive email click on the SEND/RECEIVE button.



Copyright © 1994 - Updated June 2004 by Intelligence Network, Inc.
(727) 442-0114 or sales@IntNet.net