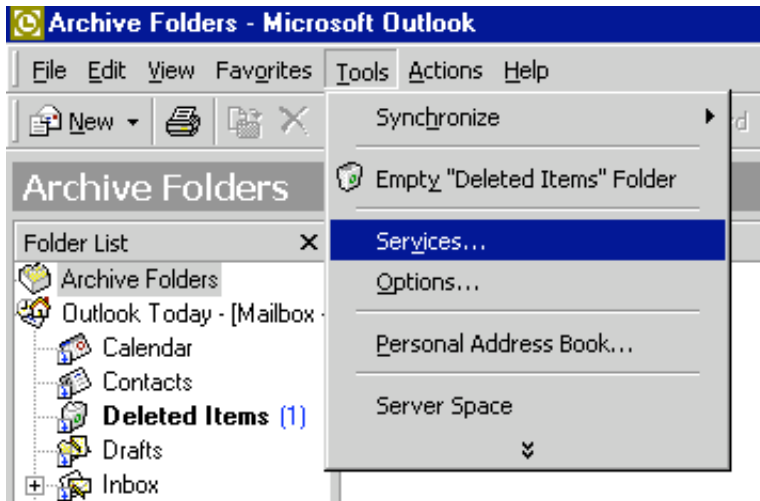
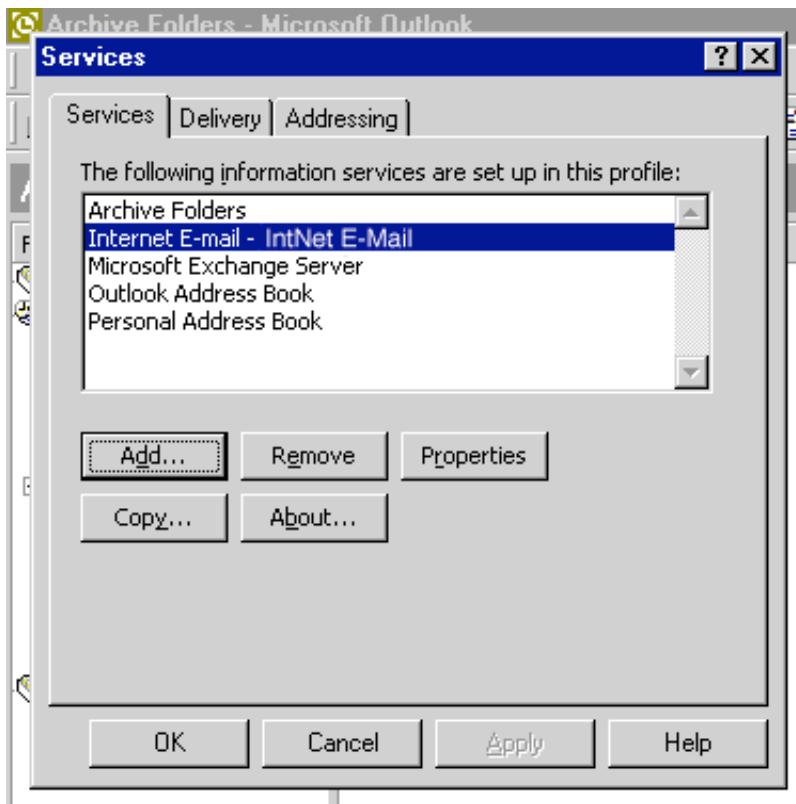


Setting up Email with Outlook 2000

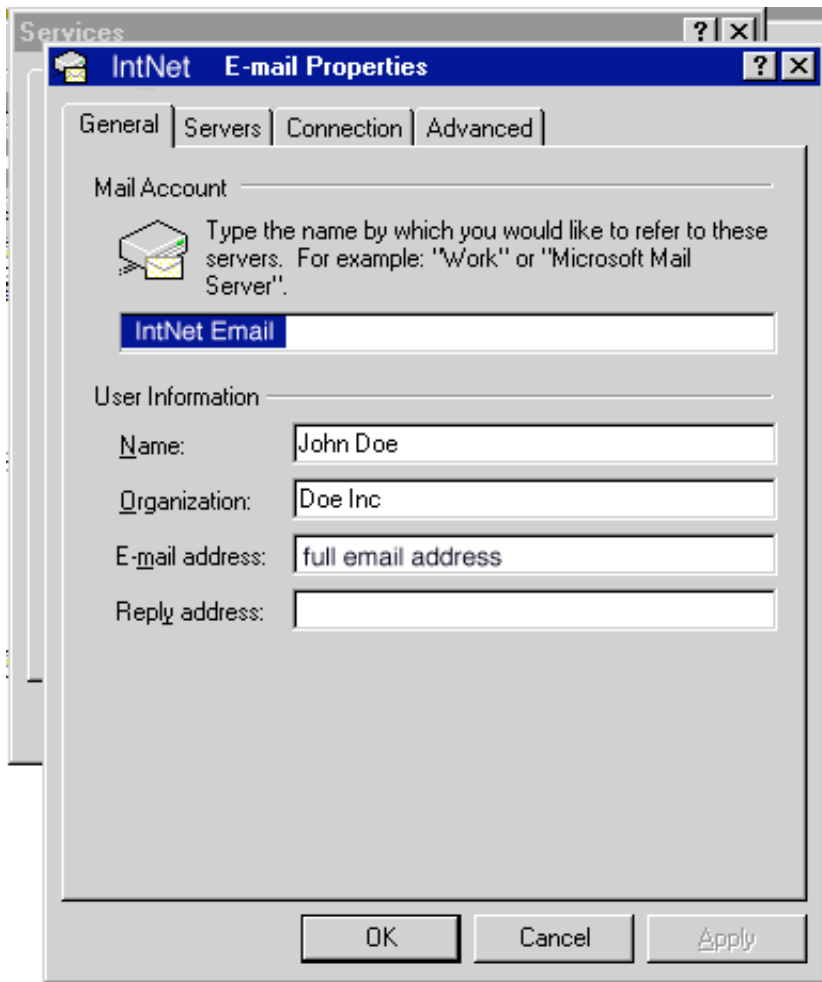
1. Open Outlook2000.
2. Click on "Tools".
3. Select "Services".



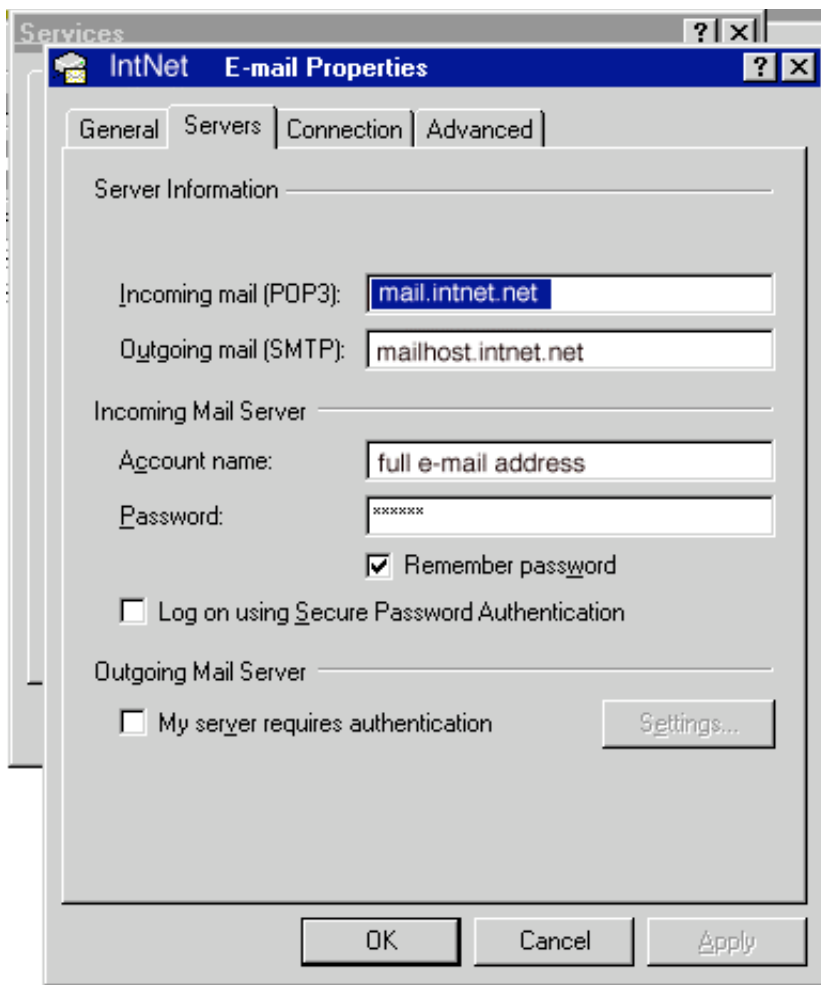
4. Click on the "Add" button and then select "Internet E-mail" from the list.



5. Type in the information regarding your email account as in the example below.

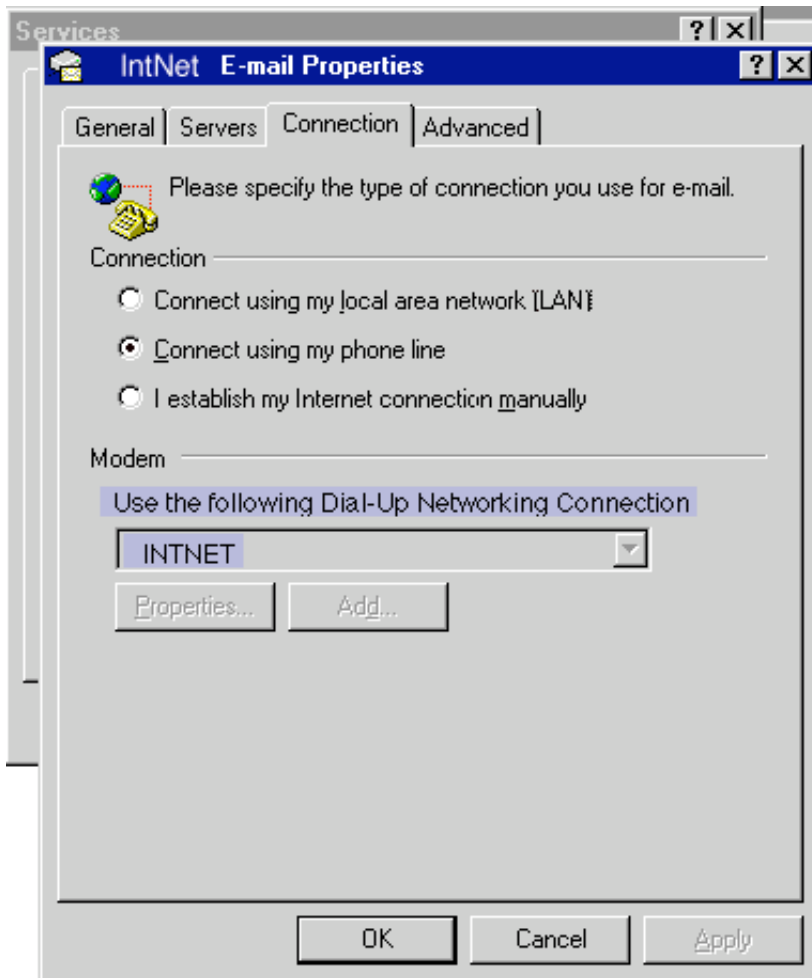


6. Click on the "Servers" tab.
7. Type in the box next to "Incoming mail (POP3):" mail.intnet.net .
POP3 = Post Office Protocol version 3 a communications standard for receiving e-mail.
8. Type in the box next to "Outgoing mail (SMTP):" mailhost.intnet.net.
SMTP = Simple Mail Transfer Protocol a communications standard for sending e-mail.
9. Type in your full e-mail address in the box next to "Account name:".
10. Type in the password you were assigned in the box next to "Password".
11. Do not put a check into the box next to "Log on using Secure Password Authentication" as we do
not use this.



12. Click on the "Connections" tab.

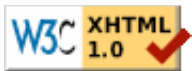
13. Select the appropriate way you connect to IntNet by clicking in the correct circle.



14. Click "OK".

15. Click "OK" again.

You can now use your e-mail.



Copyright © 1994 - Updated June 2004 by Intelligence Network, Inc.
(727) 442-0114 or sales@IntNet.net