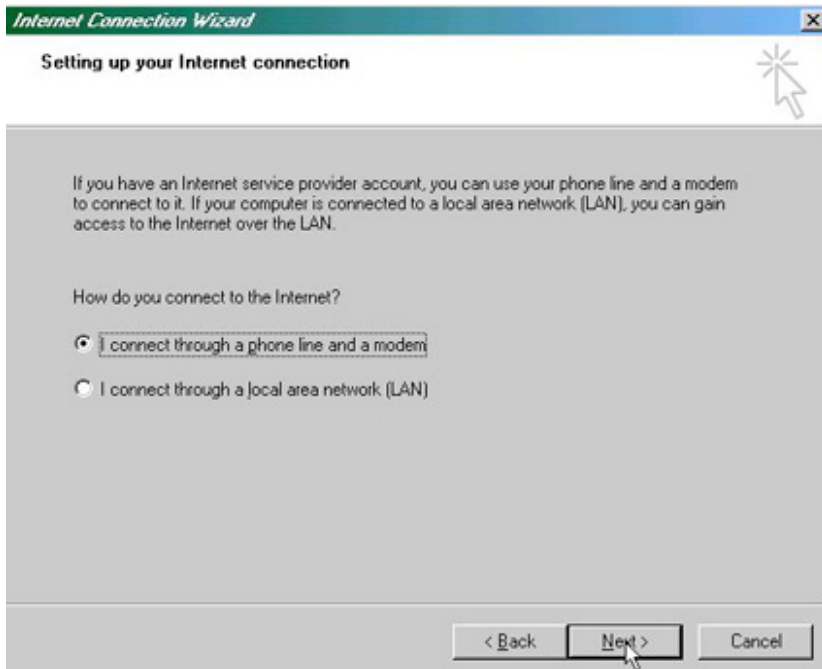


Set Up Instructions for WindowsME

Microsoft has put an easy setup wizard for all the Internet settings. If there is a *Connection Wizard* on your desktop, just double click it. If it is not on your desktop, it should be under **Start> Programs> Accessories> Communications**.

Once the wizard has started up, just go through the screens and fill out the information as it is listed below.



Internet Connection Wizard

Setting up your Internet connection

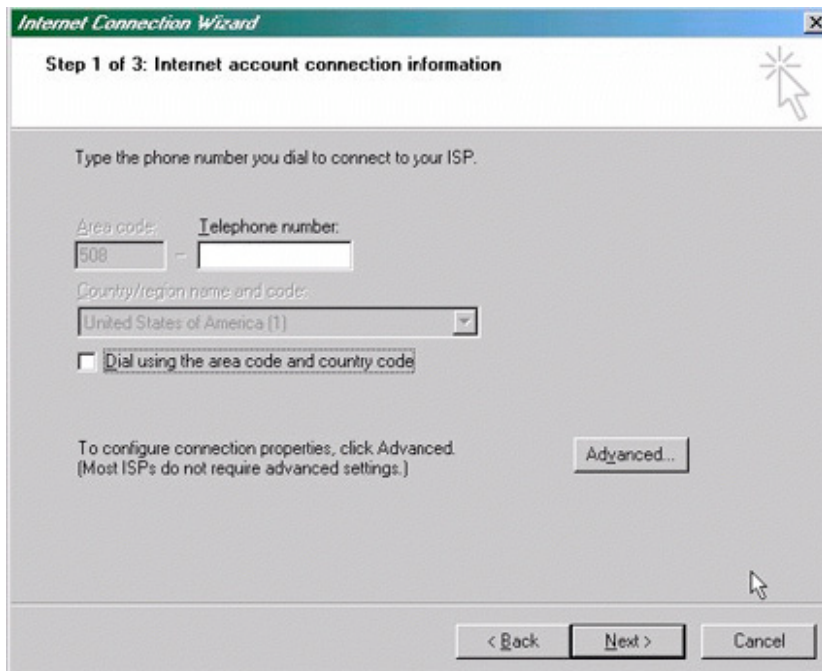
If you have an Internet service provider account, you can use your phone line and a modem to connect to it. If your computer is connected to a local area network (LAN), you can gain access to the Internet over the LAN.

How do you connect to the Internet?

I connect through a phone line and a modem

I connect through a local area network (LAN)

< Back **Next >** Cancel



Internet Connection Wizard

Step 1 of 3: Internet account connection information

Type the phone number you dial to connect to your ISP.

Area code: - Telephone number:


Country/region name and code:
 ▼

Dial using the area code and country code

To configure connection properties, click Advanced. (Most ISPs do not require advanced settings.) **Advanced...**

< Back **Next >** Cancel

Internet Connection Wizard [X]

Step 2 of 3: Internet account logon information 


Type the user name and password you use to log on to your ISP. Your user name may also be referred to as your Member ID or User ID. If you do not know this information, contact your ISP.

User name:

Password:

< Back Next > Cancel

Internet Connection Wizard [X]

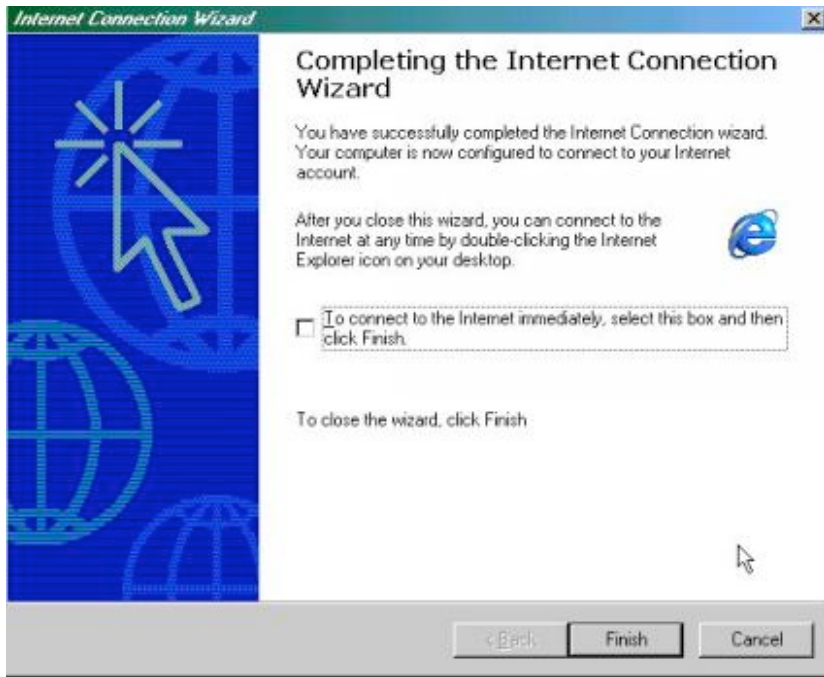
Step 3 of 3: Configuring your computer 

Information about your Internet account is grouped together as a dial-up connection and labeled with a name you provide.

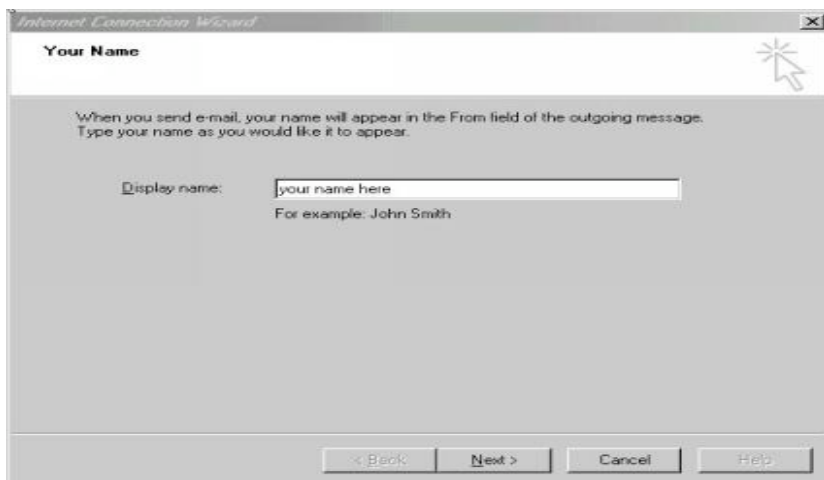
Type a name for the dial-up connection. This can be the name of your ISP or any name you want to use.

Connection name:

< Back Next > Cancel



If you plan on using **IntNet email**, you will need to enter the following information into the Wizard.



Internet Connection Wizard

Internet E-mail Address

Your e-mail address is the address other people use to send e-mail messages to you.

E-mail address:
For example: someone@microsoft.com

< Back Next > Cancel Help

Internet Connection Wizard

E-mail Server Names

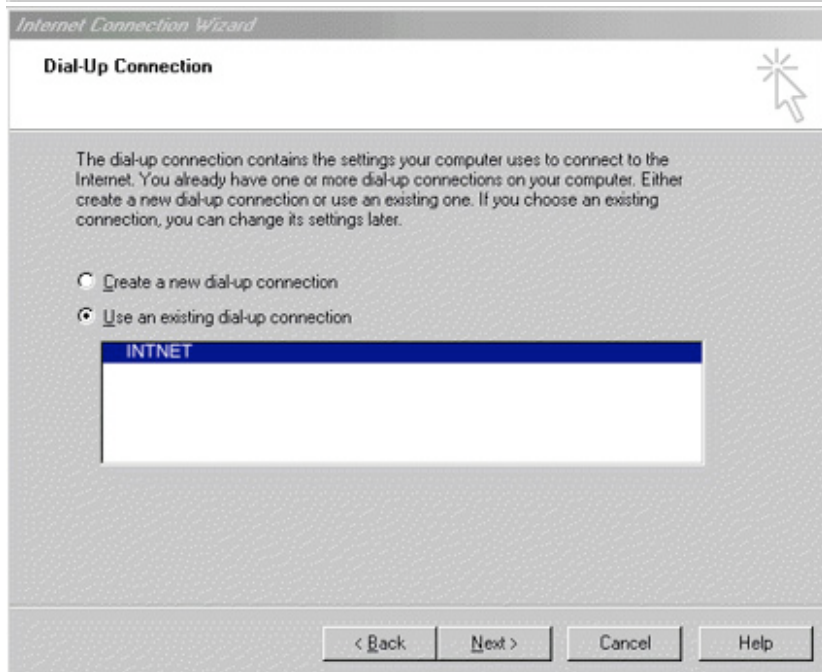
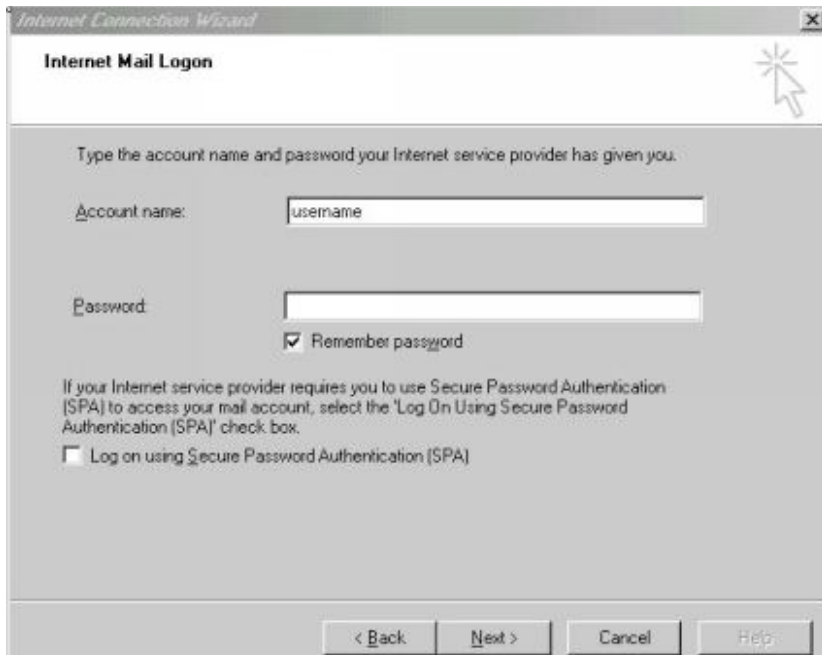
My incoming mail server is a server.

Incoming mail (POP3 or IMAP) server:

An SMTP server is the server that is used for your outgoing e-mail.

Outgoing mail (SMTP) server:

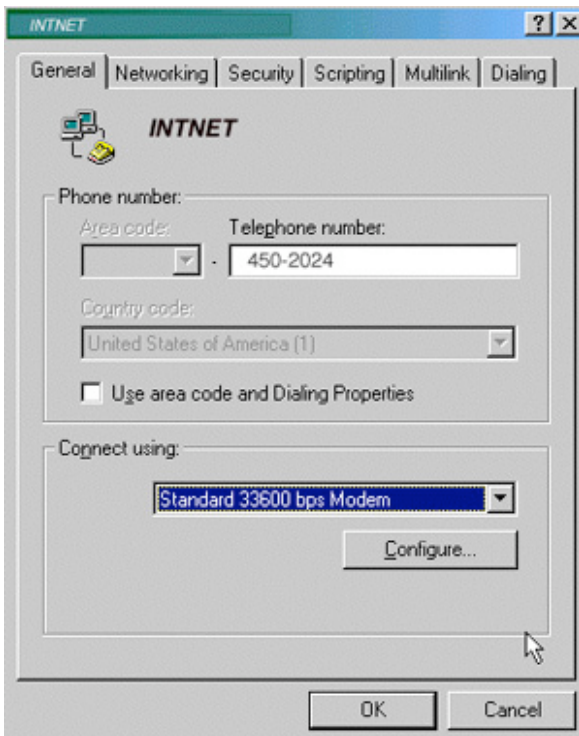
< Back Next > Cancel Help



After completing the Internet Setup Wizard, go to **My Computer > Control Panel > Dial-Up Network**. Right click on the IntNet icon



Make sure that the check box next to "Use area code and Dialing Properties" is not checked.



Now that you have completed this section click on **OK** and **OK** again, close out of **Dial-up Networking** Everything is now configured and you're ready to go.

